

Bulwer Yard Studios Architect + Designer Profiles

For the London Open House event, Adams + Collingwood have invited two talented ceramic artists, both well known to the Bulwer Yard Studios, to display a selection of their work in the studio:

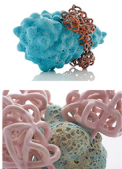
Tessa Eastman

Tessa Eastman is a London based British ceramic artist who has twenty years of experience of working with clay.

Tessa has worked as an assistant to renowned ceramicist Kate Malone, who featured in The Great British Pottery Throw Down TV series. Tessa's work has been shown by various galleries in the UK and internationally and she has taken part in exhibitions with Contemporary Applied Arts and with ceramic collector Preston Fitzgerald, the judge of the Young Masters Prize. Tessa is currently working towards shows at the Johanssen Gallery in Berlin (Sept/Oct 2016) and the Zetter Hotel in Clerkenwell (Dec- Jan 2017).

Tessa has produced a fresh body of work that grew out of her MA at the Royal College of Art in 2015. These original pieces show her ongoing commitment to the challenge of hand building in clay, using various techniques to create complex ceramic sculptures. She observes the often overlooked detail of natural microscopic structures as a starting point to developing works which possess a curious ambiguity. Undulating cloud-like forms are juxtaposed with harsh rock and mesh structures, revealing internal, expanding space. When grouped, pieces have a distinctive dialogue which generates an atmosphere of harmony and tension.

www.tessaeastman.com



Robert Collingwood

Robert Collingwood worked as an architect for 40 years in London and Prague, where he established one of the first international practices in the 1990s while a partner in the London practice of Jestico + Whiles. He has worked on a wide range of building types from embassies and British Council premises in many countries, to new build and conservation projects in Prague and London. Adams and Collingwood Architects was established in London with Rob Adams in 2002 and the practice moved into their own purpose designed office development at Bulwer Street in 2005.

Robert has had a long standing interest in Ceramics, dating back to when he was a pupil of Po Chap Yeap as a schoolboy. This interest was reawakened recently with the opportunity to design a new pottery studio for a longstanding client who encouraged him to get back on the wheel.

By 2016 this was becoming too powerful an interest to manage part time, so he changed occupation from architect to potter, and has been gradually developing his skills as a thrower since then. So far his work is all thrown, with a growing interest in the compositional possibilities of altered and assembled pieces- bottles teapots etc.

He is naturally inspired by other architect potters, in particular Geoffrey Whiting, whose teapots achieve a rare perfection of line, proportion and balance.

